

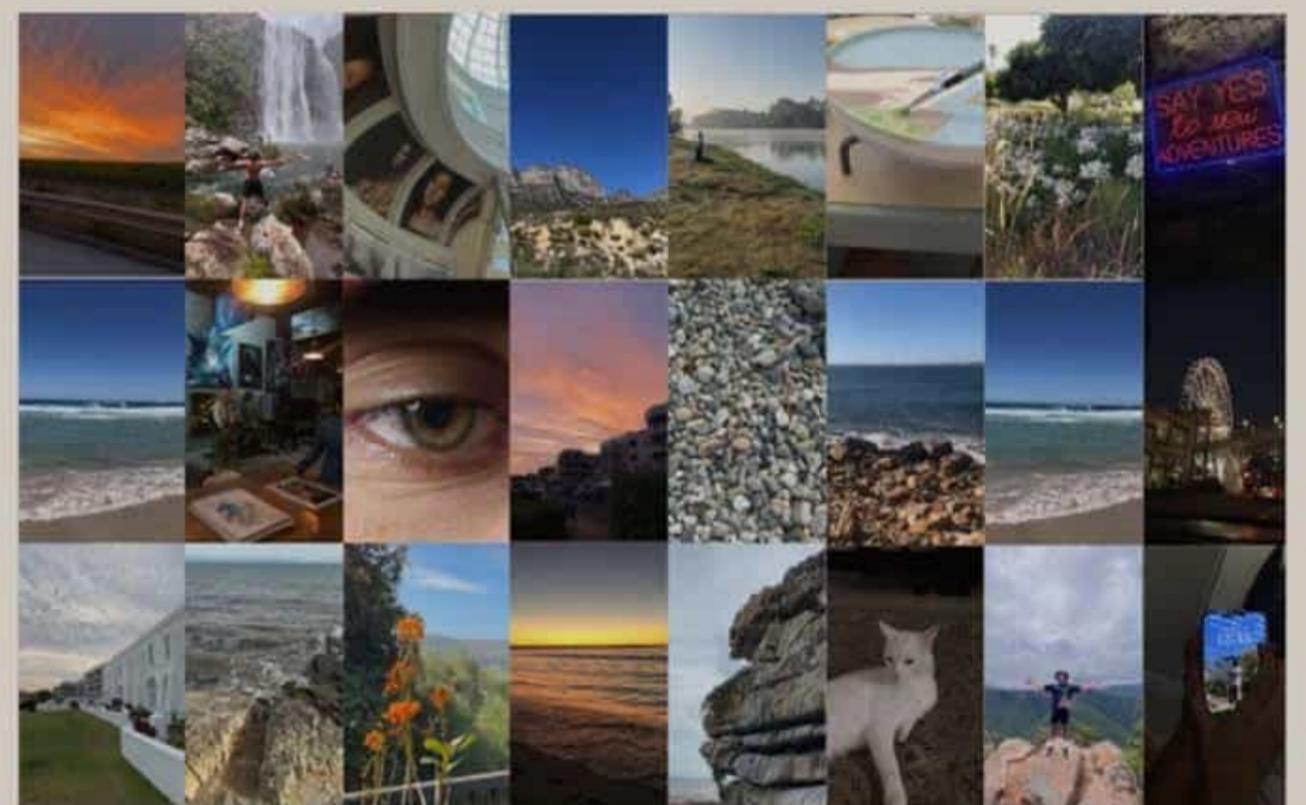
CONCEPT AND MOOD

CONCEPTUAL PROCESSES



CONCEPT BOARD

THE CONCEPT IS TO LIVE FOR THE MOMENTS WE'D DIE FOR!. THIS PALLIATIVE CARE IS GOING TO INTRODUCE A NEW FORM OF TREATMENT THAT ENABLES THE DIFFERENT SENSES OF THE PATIENTS TO BE ACTIVE. THIS WILL BE DONE BY CREATING A HOME AWAY FROM HOME, THAT WILL ALLOW YOU TO EXPERIENCE THE JOYS OF LIFE, LIVE OUT THE FINAL DAYS IN COMFORT AND BE OPEN TO CREATING HAPPY MOMEMNTS.



INSPIRATIOIN



INSPIRATION HAS BEEN TAKEN FROM JAPANESE ARCHITECTURE, MINIMALISM AND MODERNISM COMBINED. THIS IS ALL PAIRED UP WITH TECHNOLOGY AND AI THAT WILL HELP CREATE A SPACE THAT EVOKES PEACE, COMFORT, LUXURY AND HAPPINESS. WHILE BEING ONE THAT CAN TRANSFORM INTO AN IMMERSIVE EXPERIENTIAL ENVIRONMENT, TO DIE FOR.



RENDERS

BEDROOM AND COMMUNAL AREA





Eternal Solace

Palliative Care

OVERVIEW

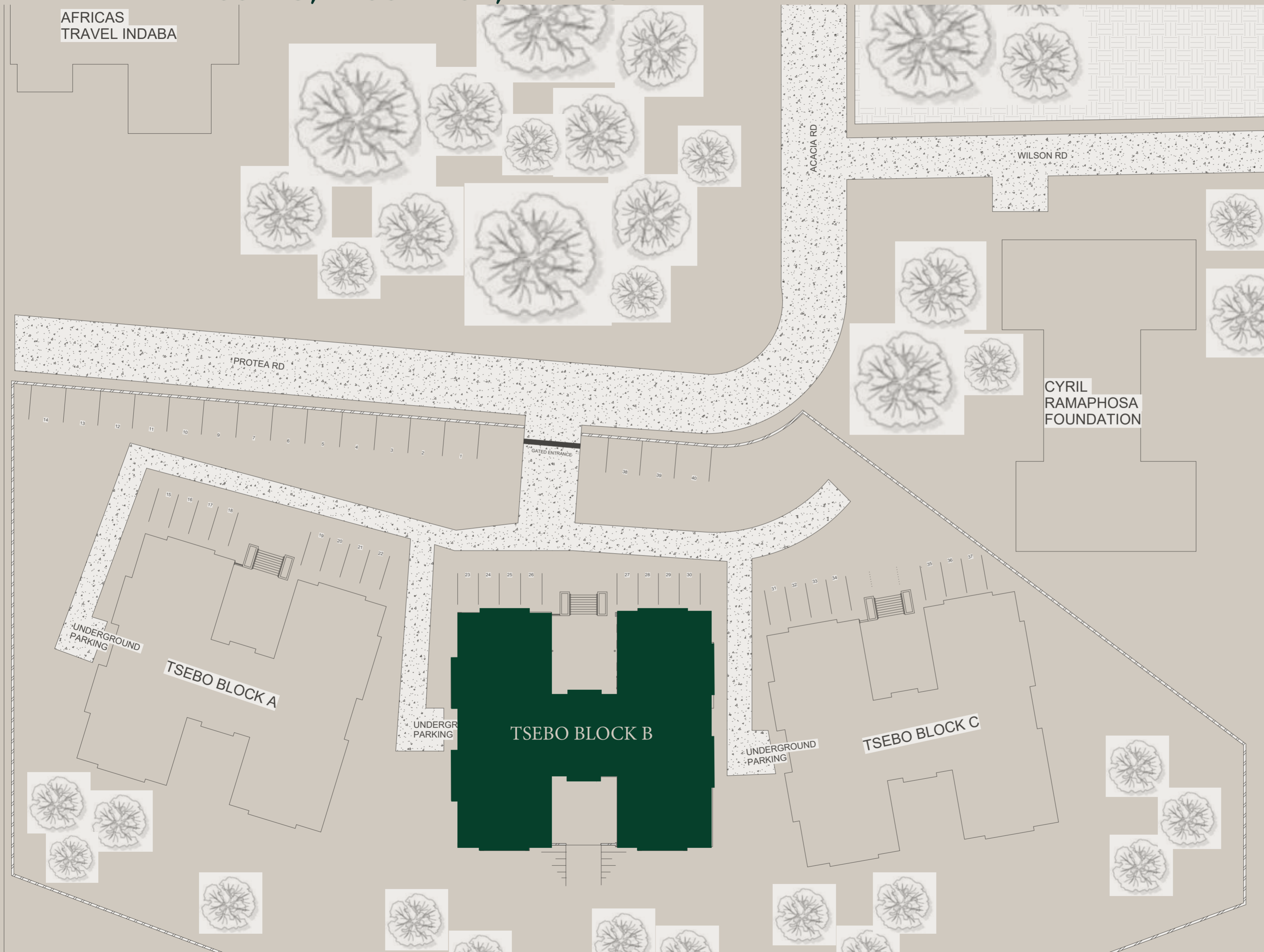
PROJECT TITLE

ADAPTIVELY REUSING THE TSEBO OFFICE PARK TO ACCOMMODATE A PALLIATIVE CARE CENTRE
THAT MEETS THE REQUIREMENTS OF THE OCCUPANTS

THIS IS NOT END OF LIFE, THIS IS LIVING.

SITE PLAN

ROUTES, LOCATION, AREAS



The site shows the building that is intended for the palliative care centre. The routes surrounding the area in Sandton and the neighbouring offices and buildings.

The area is one of the more quieter ones in Sandton, making it perfect for this project.





Eternal Solace

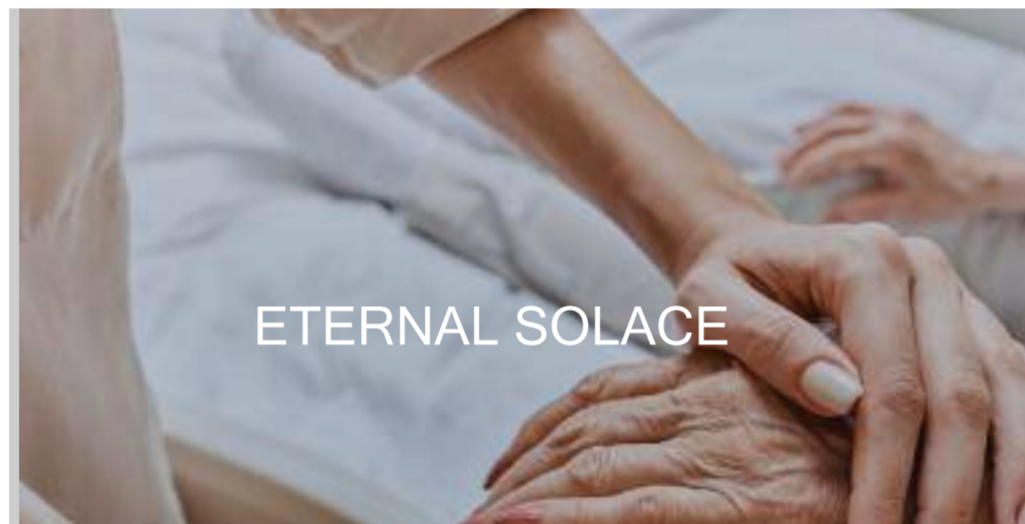
Palliative Care

'eternal' - lasting or existing forever; without end
-oxford dictionary

'solace' - give comfort or consolation
-oxford dictionary

combined, the meaning of the name becomes 'the ever lasting feeling of comfort and consolation' (which is the essence of palliative care)

PALLIATIVE CARE ETERNAL SOLACE



approach focused on providing serious illness, regardless of the quality of life for both the patient and their family. Palliative care can be provided alongside curative treatment and is not limited to the end of life. It is a critical component of hospice care.

of the diagnosis. The primary focus is on the patient and their family. Palliative care is not limited to the end of life. It is a critical component of hospice care.

of the diagnosis. The primary focus is on the patient and their family. Palliative care is not limited to the end of life. It is a critical component of hospice care.

approach focused on providing serious illness, regardless of the quality of life for both the patient and their family. Palliative care can be provided alongside curative treatment and is not limited to the end of life. It is a critical component of hospice care.

and their family. Palliative care can be provided alongside curative treatment and is not limited to the end of life. It is a critical component of hospice care.

ETERNAL SOLACE



THE DANDELION



a symbol of hope, healing, and resilience



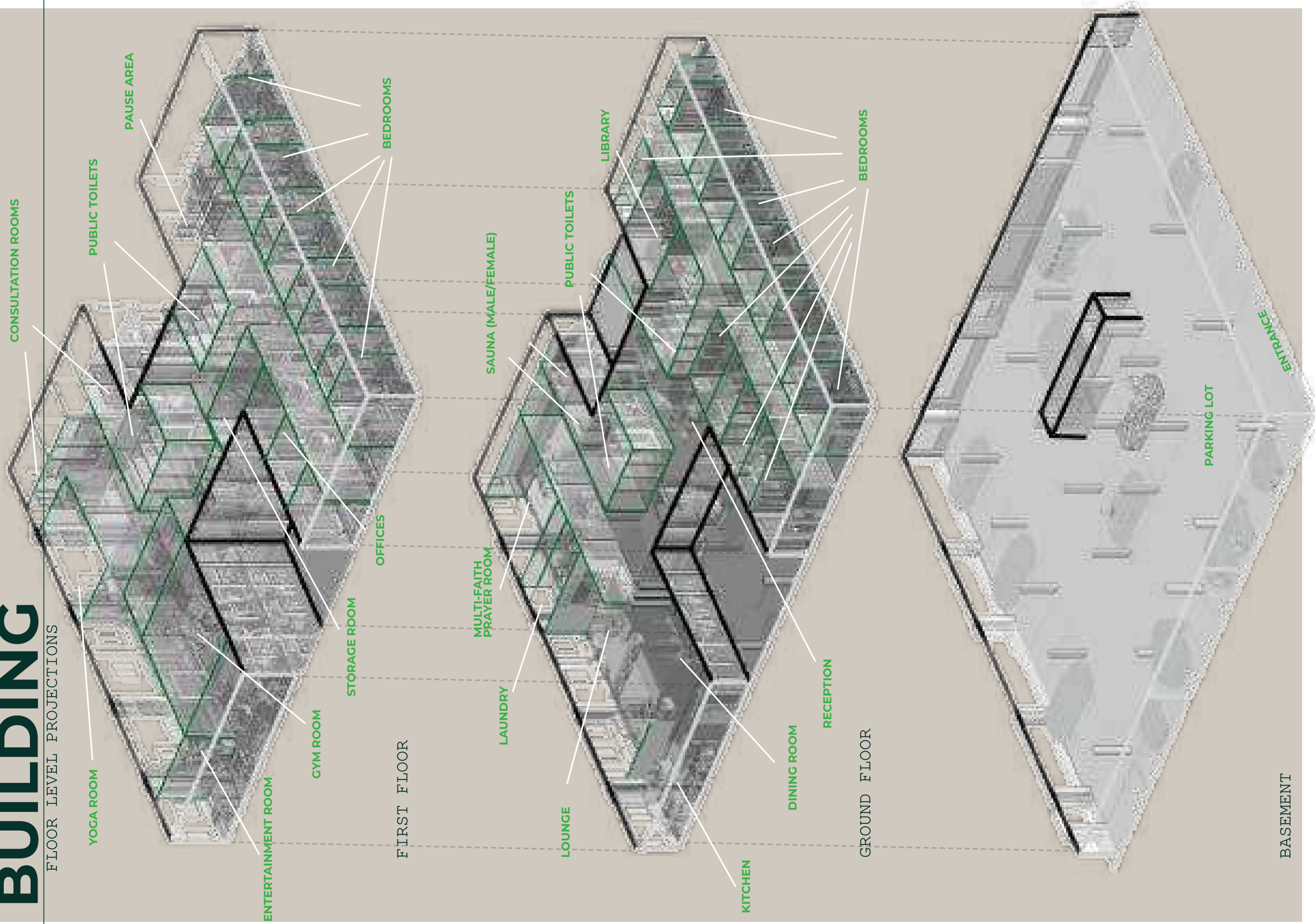
BRANDING

BRAND IDENTITY



BUILDING

FLOOR LEVEL PROJECTIONS



YOGA ROOM

CONSULTATION ROOMS

PUBLIC TOILETS

PAUSE AREA

OFFICES

BEDROOMS

STORAGE ROOM

GYM ROOM

ENTERTAINMENT ROOM

FIRST FLOOR

MULTI-FAITH PRAYER ROOM

LAUNDRY

LOUNGE

SAUNA (MALE/FEMALE)

PUBLIC TOILETS

LIBRARY

KITCHEN

DINING ROOM

RECEPTION

GROUND FLOOR

BEDROOMS

PARKING LOT

ENTRANCE

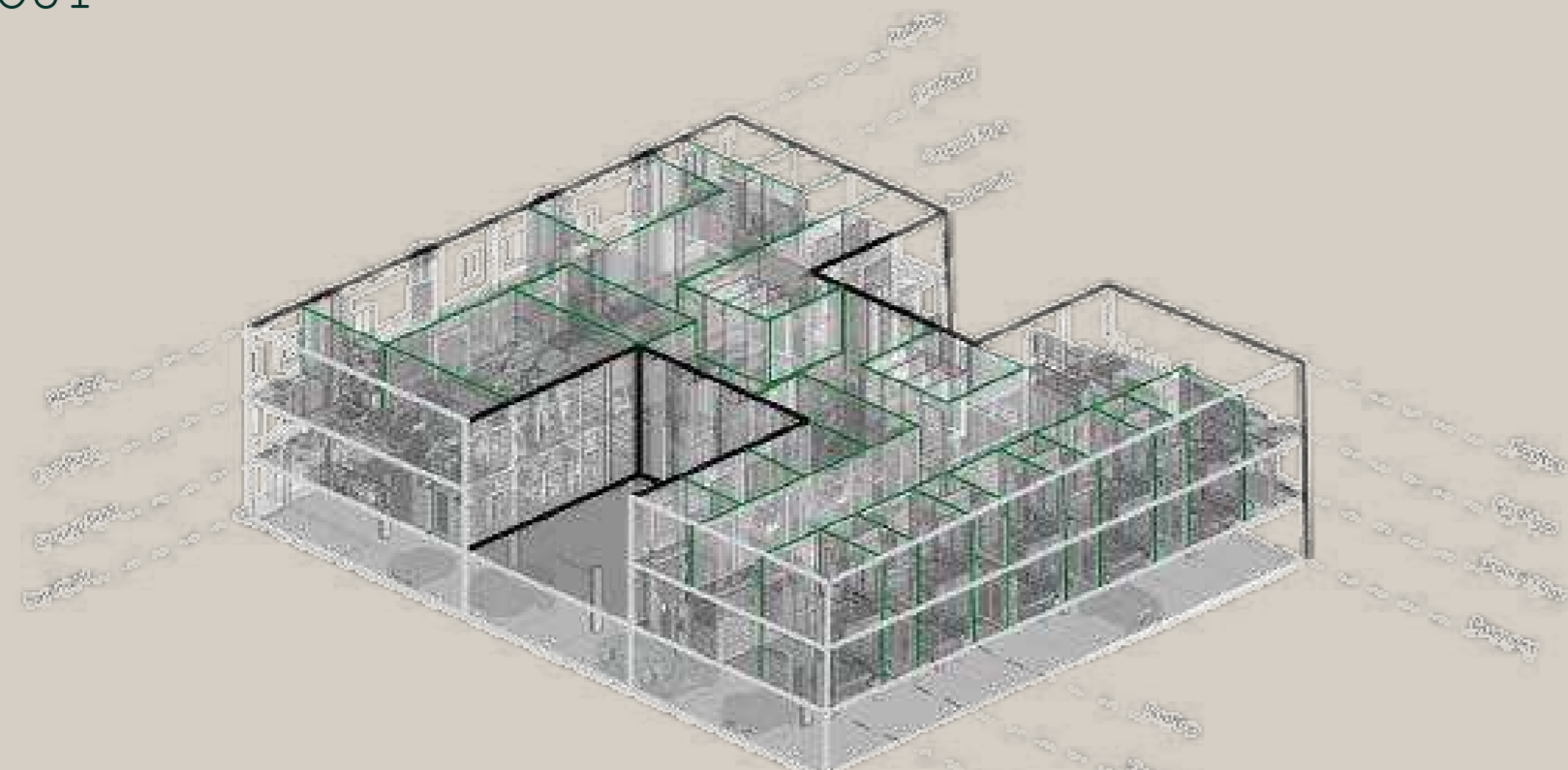
BASEMENT

ZONING AND CIRCULATION

FLOOR LAYOUT




THE IMAGE ON THE LEFT SHOWCASES THE DIFFERENT FLOOR LEVELS OF THE BUILDING AND A QUICK BREAKDOWN OF HOW THE ROOMS HAVE BEEN BROKEN DOWN.

THIS IS FURTHER BROKEN DOWN BELOW TO INDICATE THE PRIVACY GRADIENTS AND TOWARDS THE RIGHT IS HOW THE FLOW OF THE SPACE WORKS ON THE DIFFERENT LEVELS.



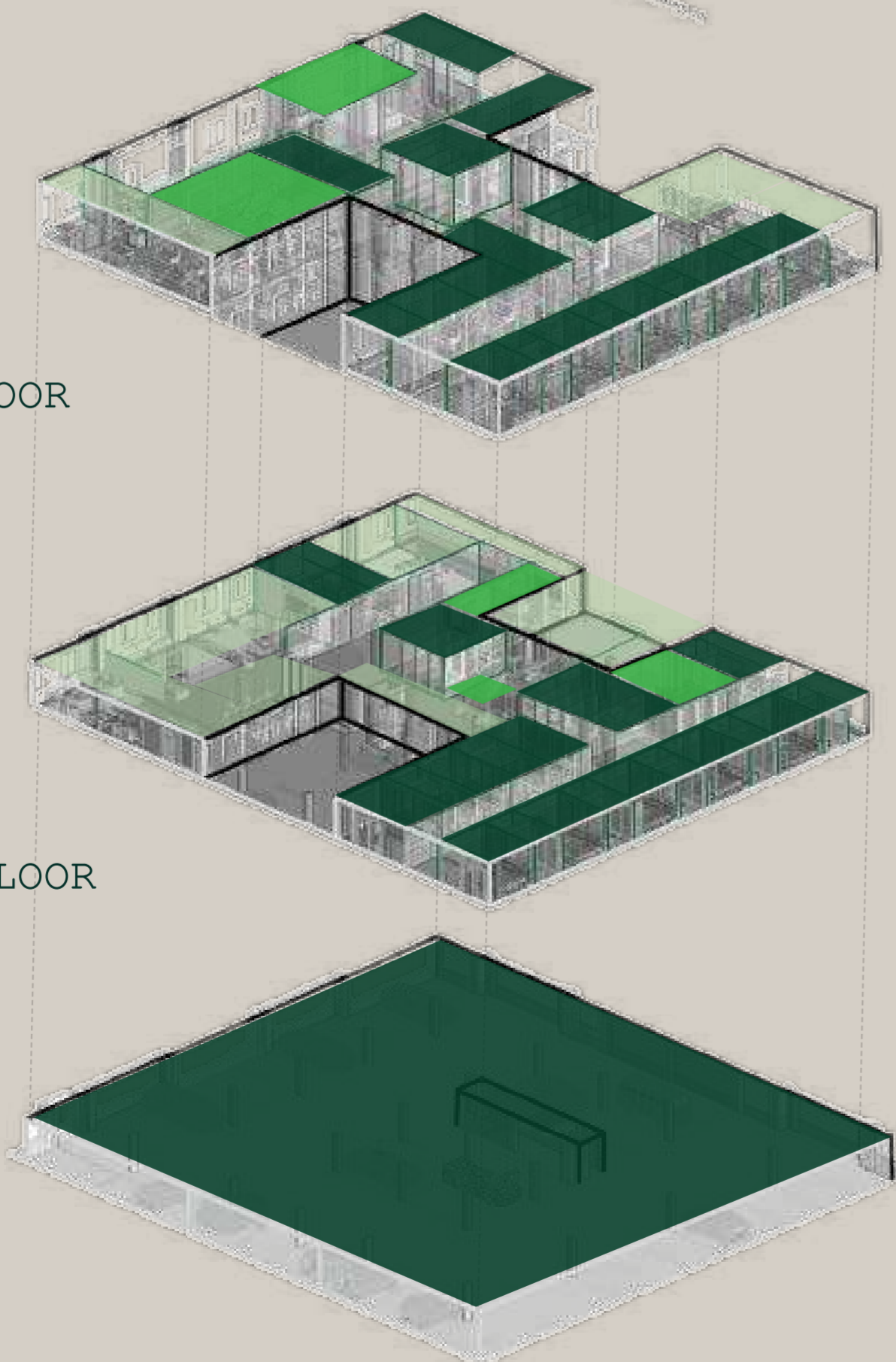
THE ZONING IN THE SPACE DEALS WITH DIFFERENT PRIVACY GRADIENTS. EACH GRADIENT ALLOWS ACCESS TO SPECIFIC PEOPLE IN THE SPACE. SOME ARE COMMUNAL WHILE OTHERS ARE HIGHLY PRIVATE AND ARE ONLY ALLOCATED TO SPECIFIC INDIVIDUALS WITHIN THE SPACE, WHETHER IT BE THE STAFF, OWNER OR PATIENTS.

FIRST FLOOR

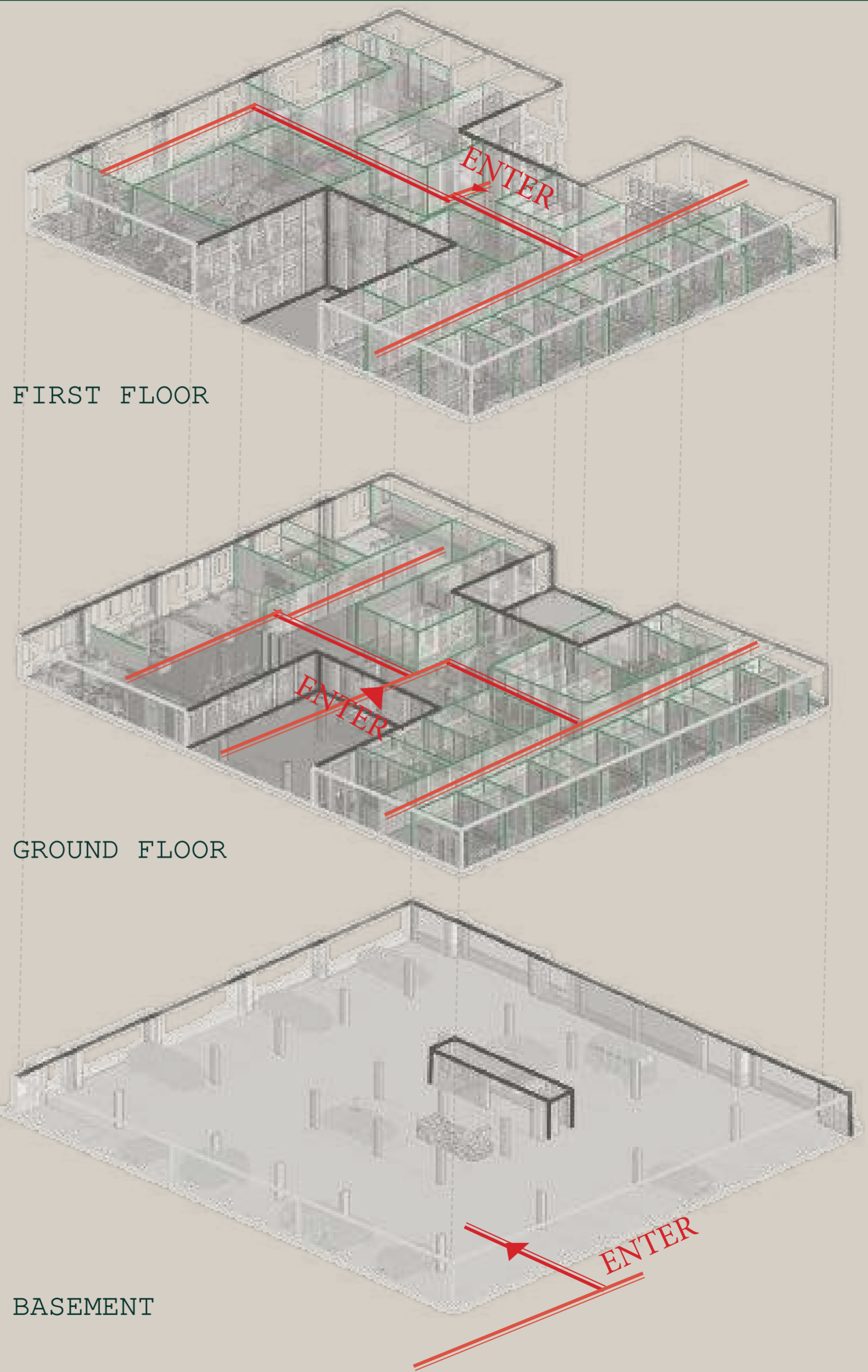
-  PUBLIC
-  SEMI-PRIVATE
-  PRIVATE

GROUND FLOOR

BASEMENT



THE BASEMENT OF THIS SPACE IS ONLY ALLOCATED TO THE STAFF, RESIDENTS OF THE BUILDING AND THE OWNERS OF THE SPACE, HIGHLY CONTROLLED AND SECURED ACCESS TO THE BASEMENT PARKING.



FIRST FLOOR

GROUND FLOOR

BASEMENT



Eternal Solace

Palliative Care

OVERVIEW

PROJECT TITLE

ADAPTIVELY REUSING THE TSEBO OFFICE PARK TO ACCOMMODATE A PALLIATIVE CARE CENTRE
THAT MEETS THE REQUIREMENTS OF THE OCCUPANTS

THIS IS NOT END OF LIFE, THIS IS LIVING.

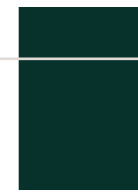
LOGO DESIGN

SYMMETRICAL, BOLD, SIMPLE



Eternal Solace

Palliative Care



C:0.99, M:0, Y:0.51, K:0.73



C:0, M:3.4, Y:8.2, K:18.4

MONTSERRAT

ABCDEFGHIJKLMNOPQRSTUVWXYZ
VWXYZ

abcdefghijklmnopqrstuvwxyz

Courier NEW

ABCDEFGHIJKLMNOPQRSTUVWXYZ

abcdefghijklmnopqrstuvwxyz

Composition

The logo is a symmetrical body that symbolises a dandelion, a symbol of hope.





INSPIRATION

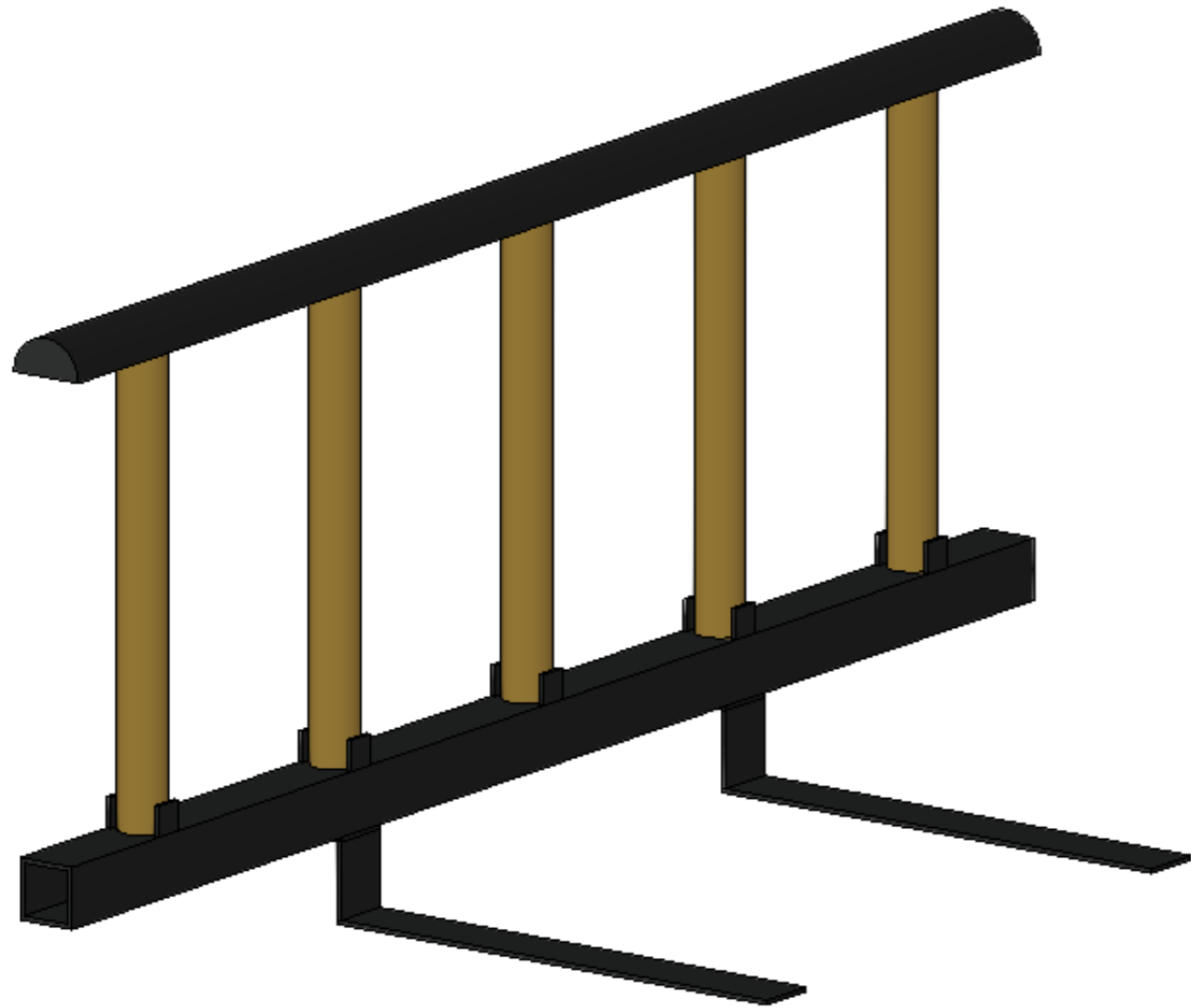
JAPANESE, MINIMALISM, NEUTRALS





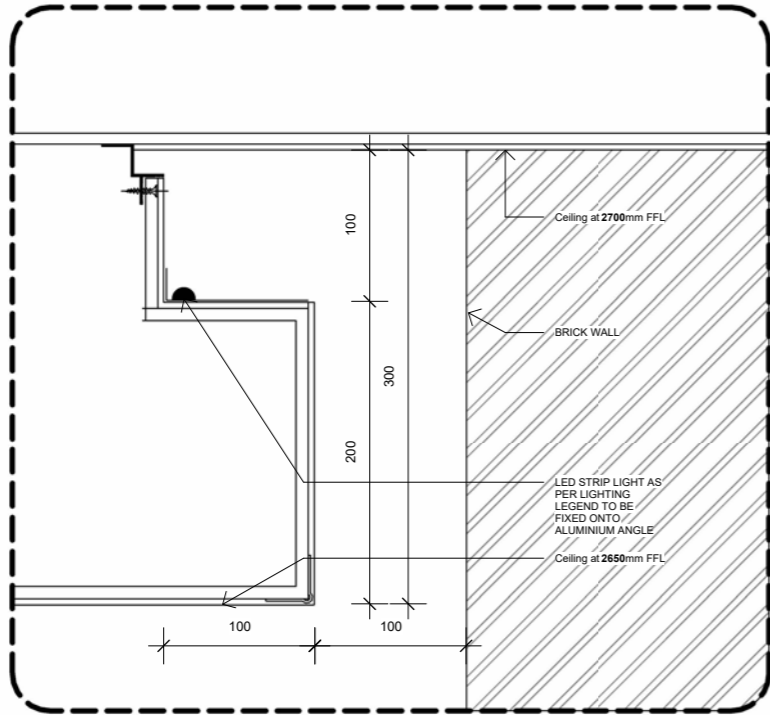
FOLD BEDSIDE RAILS

MEDICAL ASSISTANCE

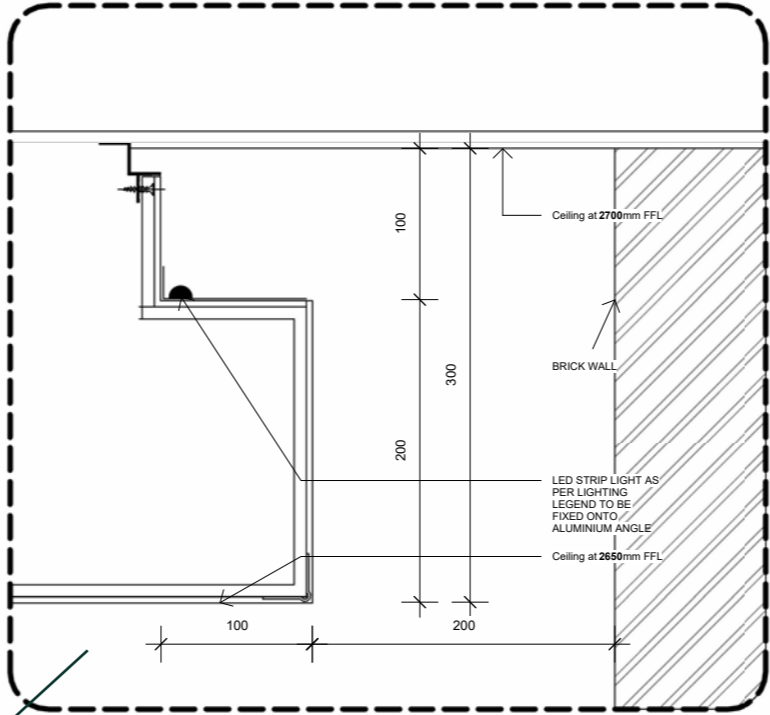


CEILING DETAIL

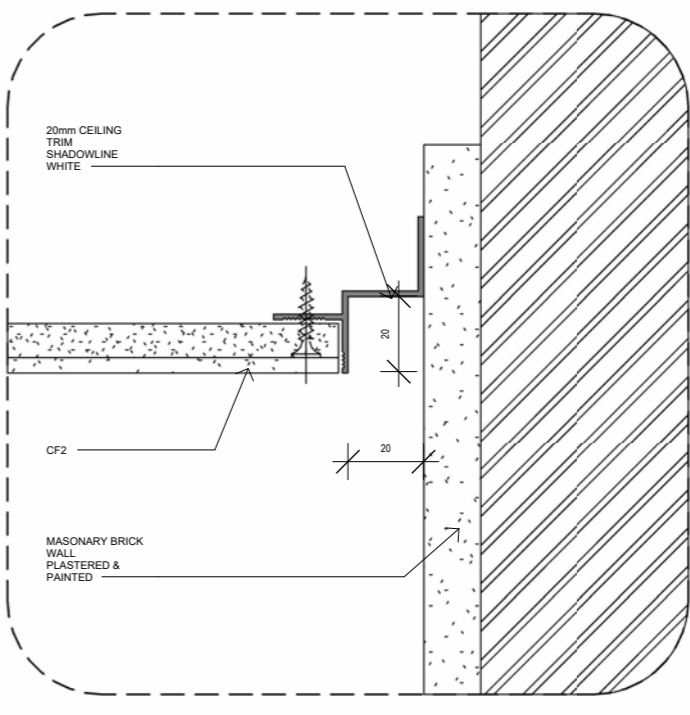
SHADOWLINE DETAILS



D1- SHADOW LINE 100MM
1:5



D2- SHADOW LINE 200MM
1:5

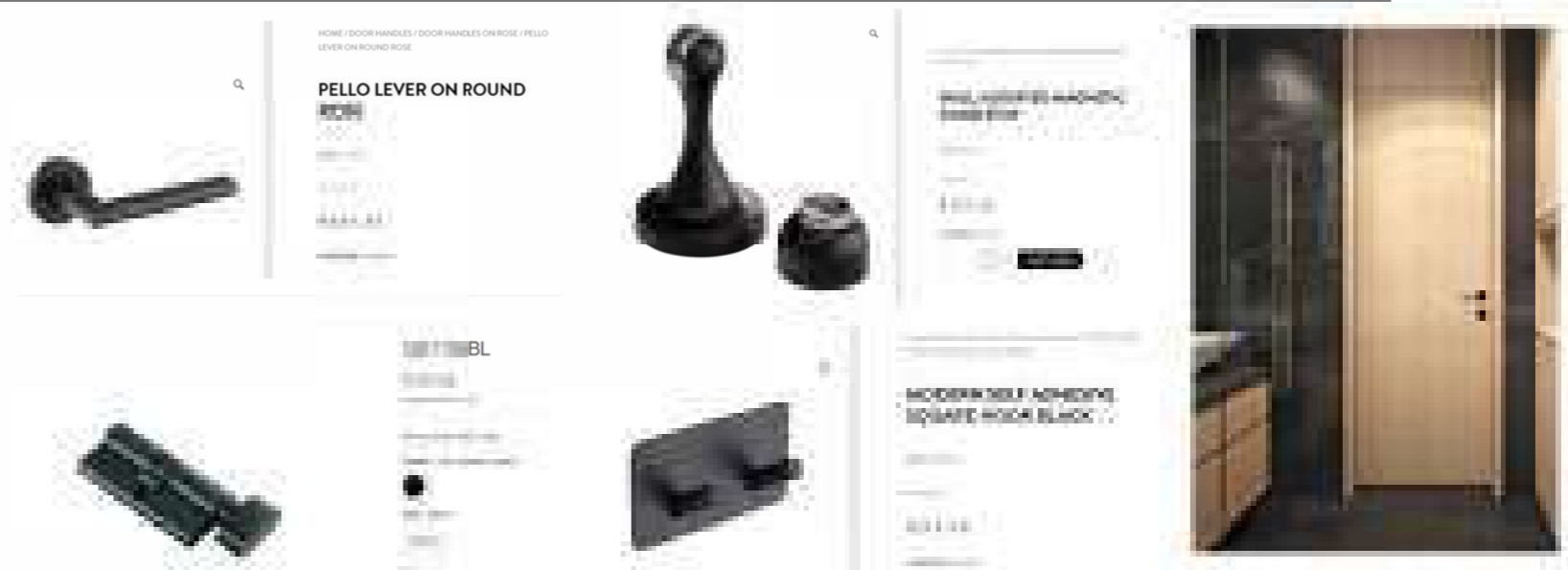
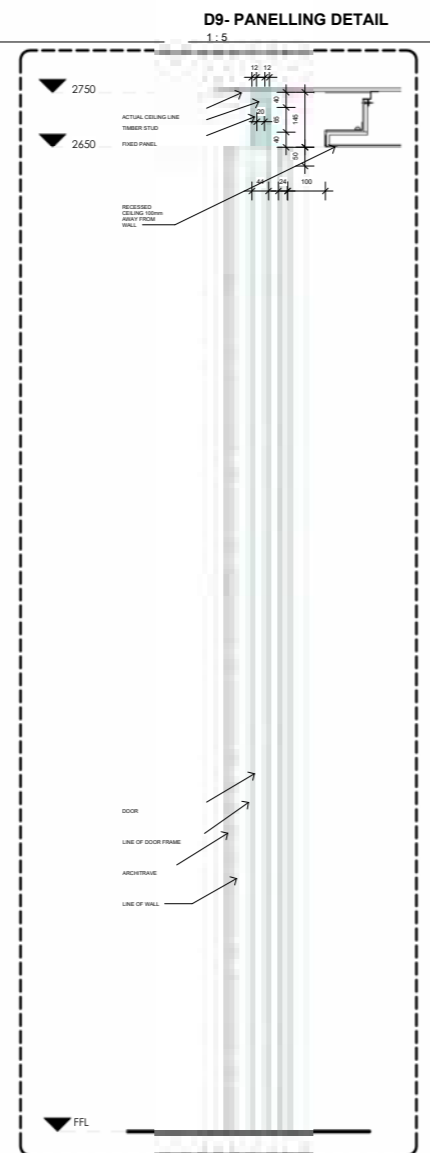
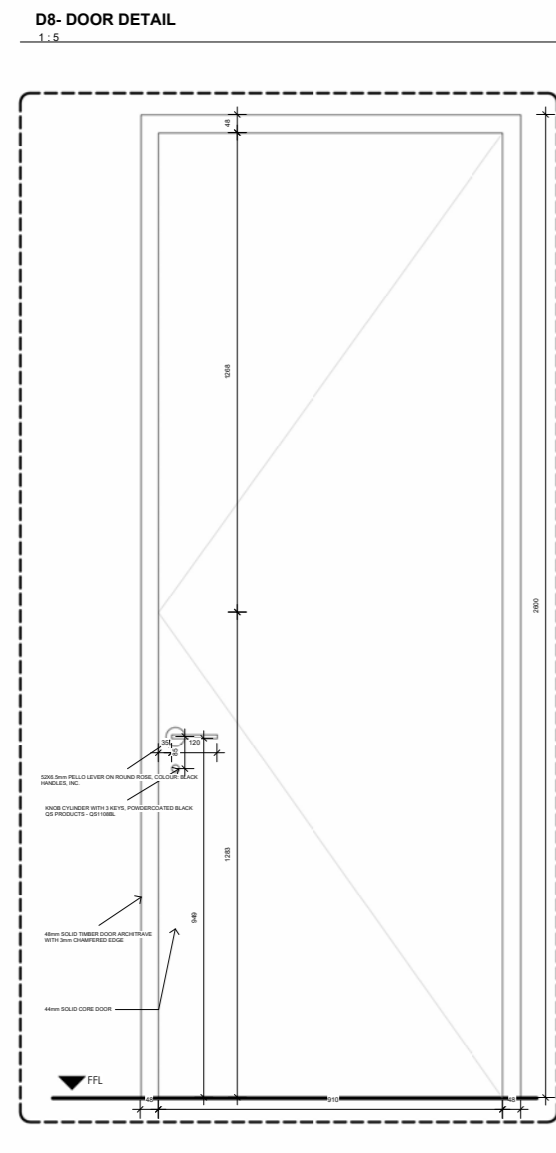
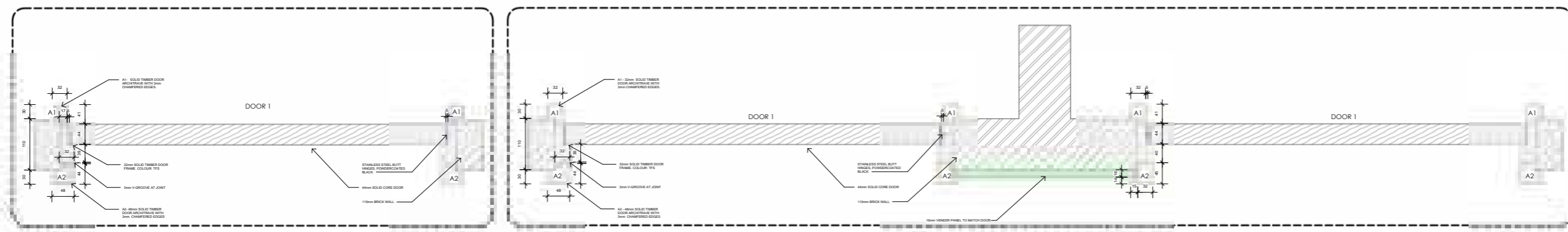


D3- Z SECTION SHADOWLINE
1:2



DOOR DETAIL

BEDROOM DOOR





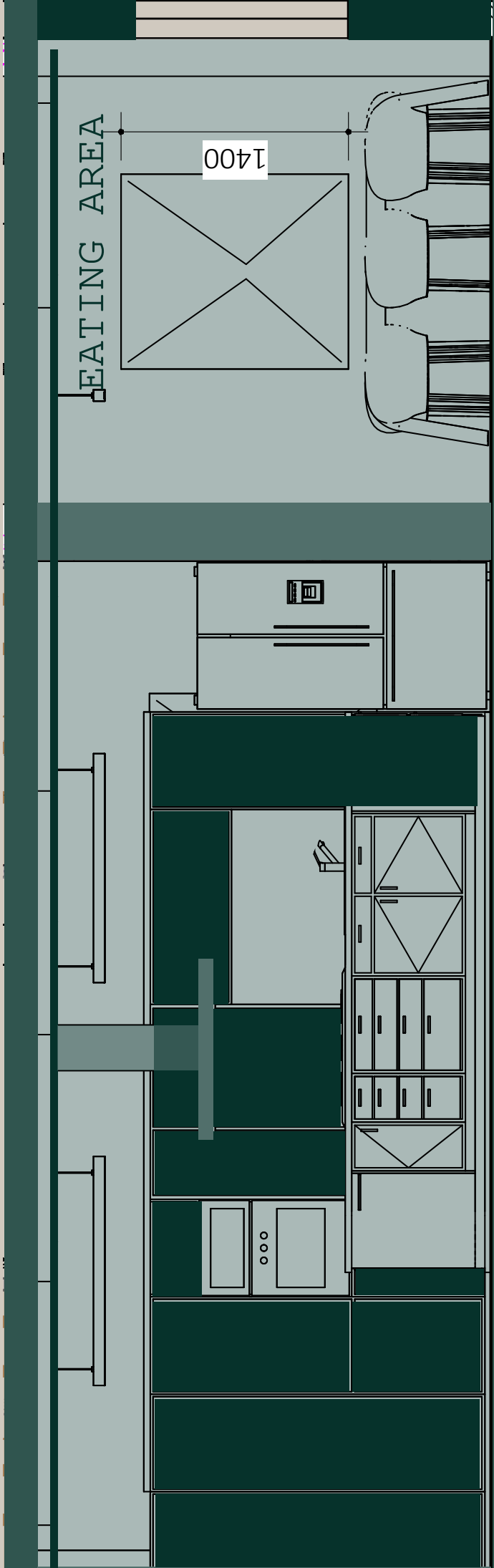
INSPIRATION

JAPANESE, MINIMALISM, NEUTRALS



KITCHEN

SECTION OF THE KITCHEN



KITCHEN

PAUSE AREA

FIRST FLOOR KITCHENETTE



LOUNGE

GROUND FLOOR TV UNIT



KITCHEN

GROUND FLOOR ISLAND UNIT



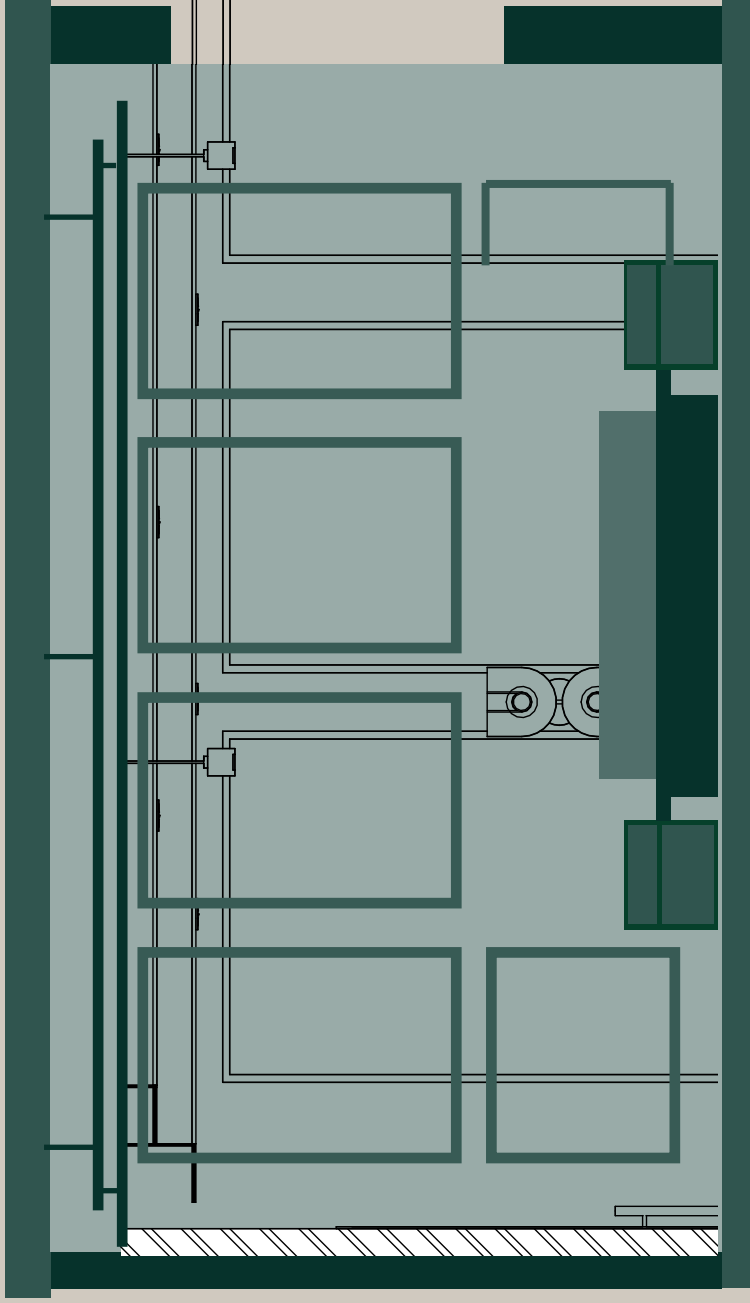
EN-SUITE

DISABLED FRIENDLY TOILET



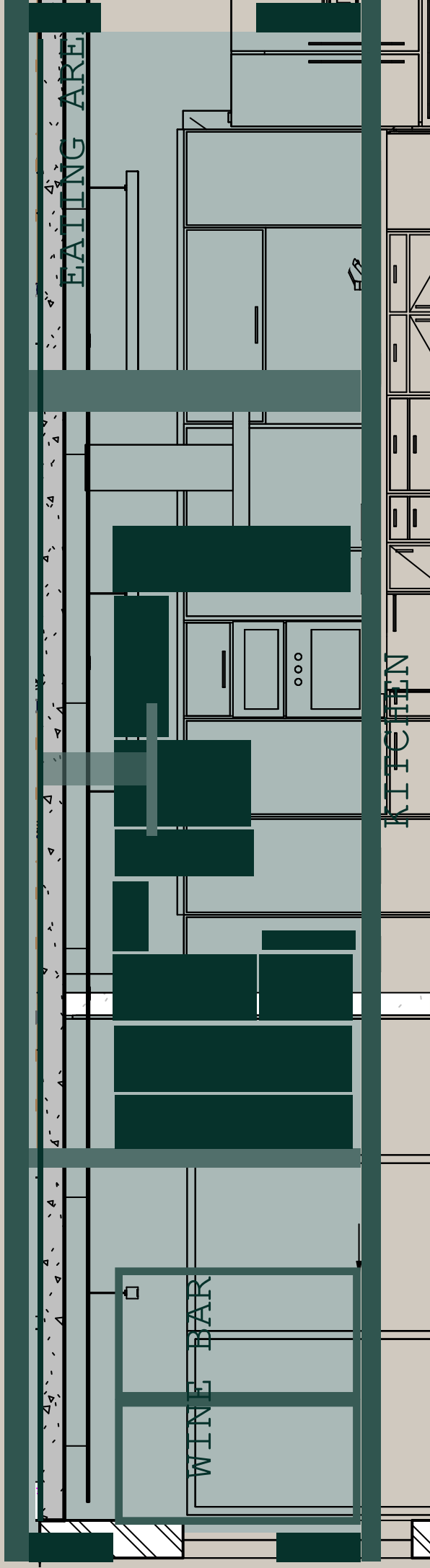
BEDROOM

SECTION OF THE BEDROOM



KITCHEN

SECTION OF THE KITCHEN



ABSTRACT

INSIGHT INTO THE PROJECT

The focus of this study is to Adaptively reuse an existing office park in Sandton, Johannesburg to accommodate a palliative care centre to meet the requirements of the occupants. Repurposing this into a unique palliative care centre that offers experiential and sensorial therapy and care, unlike most centres found in Johannesburg.

With the rapid incline of non-communicable disease, infections and terminal illnesses; palliative care has been a forefront topic in discussion (World Health Organisation, 2018). The need for centres that cater for patients that are terminally and chronically ill has been increasing over the years. While there are centers that cater to the immediate need of healthcare, there are minimal institutions that offer all-round services including inclusivity, luxury and experiential/sensorial design strategies to cater to the well-being of the occupants.

This research findings aid in unlocking new potential in Interior Design that cater to the needs of palliative care occupants. The findings presented in this document were done in co-ordination with industry professionals (CEO of Hospice Wits), case studies and precedents that highlight the needs of these patients and building analysis that show context of the spaces in question. All aiding in the final design and application to process that will allow for a proposed new centre that caters to the needs of the palliative care occupants. Having their needs and requests at the forefront of this design.

AIMS & OBJECTIVES

MAIN AIM OF THE PROJECT

AIMS OF THE RESEARCH

Aim:

To produce a design proposal for the repurposing of the Tsebo Group building into a serene, experiential and comforting living palliative care unit that meets the requirements of the occupants.

Objectives:

1. To repurpose the building and spatially align it to meet the needs of the user and accommodate for multi-functional and easily adaptable spaces.

2. To introduce the spatial requirements needed for the care of the patients and aid in assisting the staff more optimally, (which include the type of medical equipment and facilities needed in the space).

3. To create a space that enhances the well-being and end-of-life stages for the palliative care patients and allowing for a space that also provides for family support both physically and psychologically.

4. To create enriching spaces that are experientially fulfilling that won't be found in any ordinary home or palliative care centre in Johannesburg. One that offers spaces of relaxation, spiritual healing and focuses on creating core memories with family and loved ones.